

**FA6111, FA6115 & FA6120 OPTICAL SMOKE ALARM & FA6215 HEAT ALARM - USER MANUAL**

Optical smoke alarms FA6111, FA6115 and FA6120 are suitable for detecting slow smouldering fires. Like other smoke alarms, they can be subject to nuisance alarms from steam and should not be placed near bathrooms.

For the earliest warning, we recommend smoke and heat alarms are fitted in all rooms where the temperature is between 4°C and 38°C. Prolonged exposure to temperatures outside those stated above will reduce product life.

Heat alarm FA6215 is specified for Class A1 detection. Your heat alarm will sound a warning when the ambient temperature in a room is between 54°C and 65°C. For the best protection, heat alarms should always be installed as part of a complete fire protection system that includes smoke alarms.

Check with local building and fire regulations for your property, to ensure compliance.

The original English version of the manual, from which these translations were taken, has been independently approved. In case of discrepancy with translated parts, FireAngel Safety Technology Limited confirms that the English guide is true and correct.



© FireAngel Safety Technology Limited  
Vanguard Centre,  
Coventry CV4 7EZ, UK  
www.fireangeltech.com  
Technical Support  
Online: www.fireangeltech.com/support  
E-mail: internationalsupport@fireangeltech.com

Note: This user manual is also available in large text and other formats.  
Please email: internationalsupport@fireangeltech.com for further information

**1. POSITIONING**

**In which room should the alarm be installed?**  
Smoke alarms FA6111, FA6115 and FA6120 are suitable for the landing, hallway, bedroom, living room and dining room.

Heat alarm FA6215 is suitable for the kitchen, garage and loft.

It is advisable to place an FA6111 Escape Light Alarm in a corridor along the escape route to light your path to safety.

Your smoke/heat alarm is suitable for use in mobile homes and caravans. This smoke/heat alarm is not intended for any non-residential, commercial or industrial application, nor for any other purpose than described.

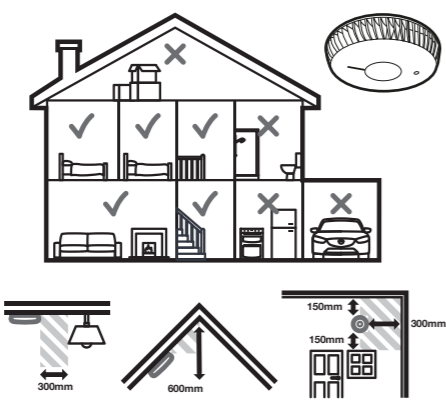
**Where in the room should the alarm be installed?**  
Smoke alarms should be sited at least 300mm from light fittings and walls. Ideally as central as possible in the room.

Smoke alarms should be positioned at no more than 600mm vertically below the highest point in the room. If positioning your smoke alarm on the wall, the top of the detection element must be between 150mm and 300mm below the ceiling, and at least 300mm from any neighbouring wall.

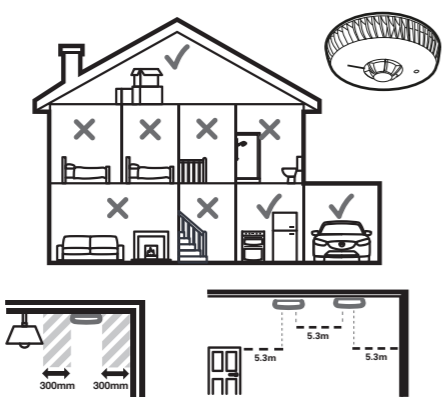
Install your heat alarm at a distance no greater than 5.3m from the farthest wall, no greater than 5.3m from a door to any room in which a fire might start and no greater than 5.3m from the next heat or smoke alarm. Heat alarms should be sited at least 300mm from light fittings and walls. Heat alarms should not be fitted on a wall.

Locations of alarms must be compliant with either BS 5839: Part 6 or relevant Building Regulations if in any doubt.

**SMOKE ALARMS FA6111, FA6115 & FA6120**

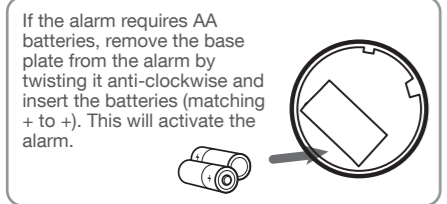


**HEAT ALARM FA6215**



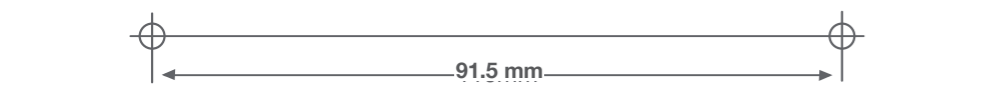
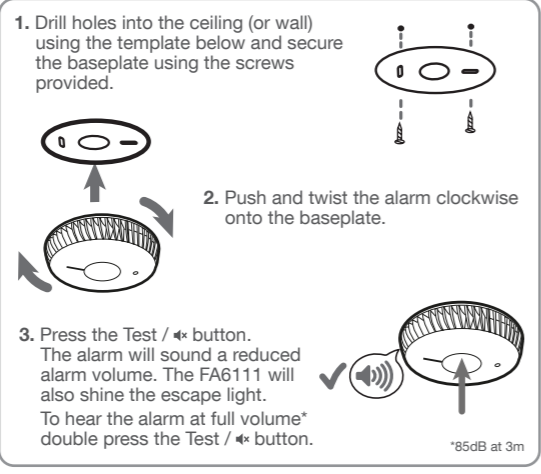
**2. INSTALLATION**

**Step 1:**  
**FA6111, FA6115 and FA6215 Replaceable battery alarms only**



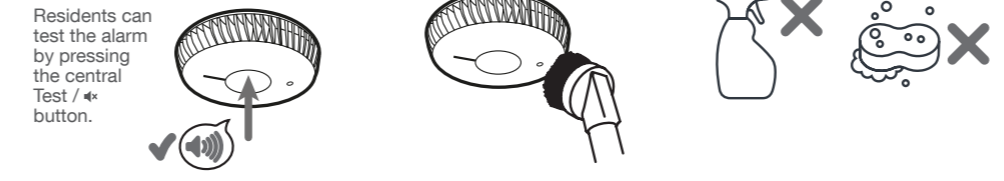
Note: For FA6120, the alarm must be installed on the baseplate to activate the alarm. For FA6111, FA6115 and FA6215, installing the batteries activates the alarm.  
After activation, the red LED on the front of the alarm should flash once every 40 seconds (approx.) to show that the alarm is active.  
The alarm test sound pattern will be: 3 beeps followed by a 1.5 second pause, then 3 beeps. The LED will flash once per second.

**Step 2:**  
**Baseplate Installation - all alarms: FA6111, FA6115, FA6215 and FA6120**

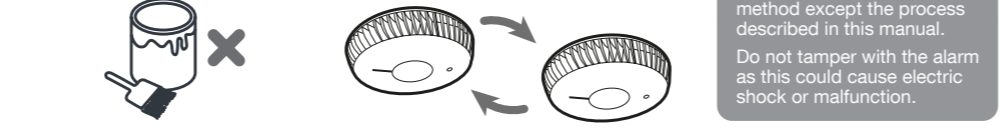


**3. MAINTENANCE**

1. Test the alarm monthly (or as often as required by local authorities).
2. Vacuum your alarm every 3 months.
3. Do not use cleaners or solvents.



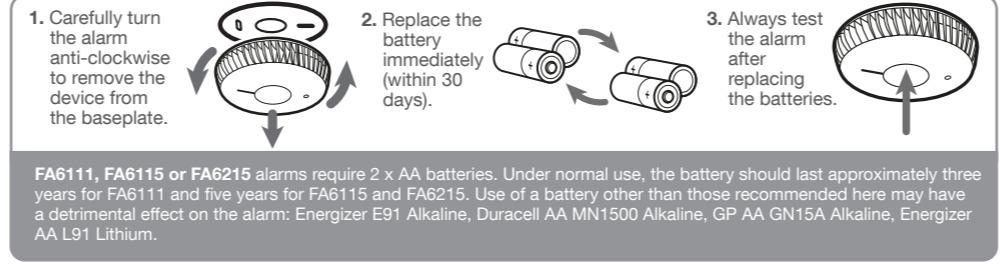
4. Do not paint the alarm.
5. Replace the alarm every 10 years.



**4. LOW BATTERY WARNING**

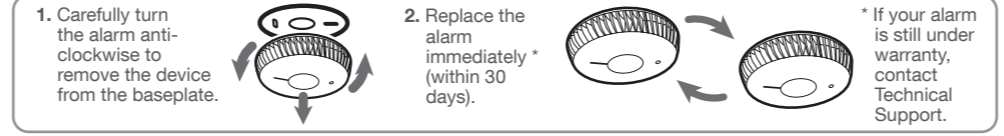
When the alarm battery is low, the alarm will 'chirp' and the Red operational LED will flash once every 40 seconds.

**1. For FA6111, FA6115 and FA6215 Replaceable Battery Alarms**



FA6111, FA6115 or FA6215 alarms require 2 x AA batteries. Under normal use, the battery should last approximately three years for FA6111 and five years for FA6115 and FA6215. Use of a battery other than those recommended here may have a detrimental effect on the alarm: Energizer E91 Alkaline, Duracell AA MN1500 Alkaline, GP AA GN15A Alkaline, Energizer AA L91 Lithium.

**2. For FA6120 Sealed Battery Alarms**



**5. FAULT INDICATION**



**System Status Indicators:** If there is a fault your alarm will display the following fault indication patterns.

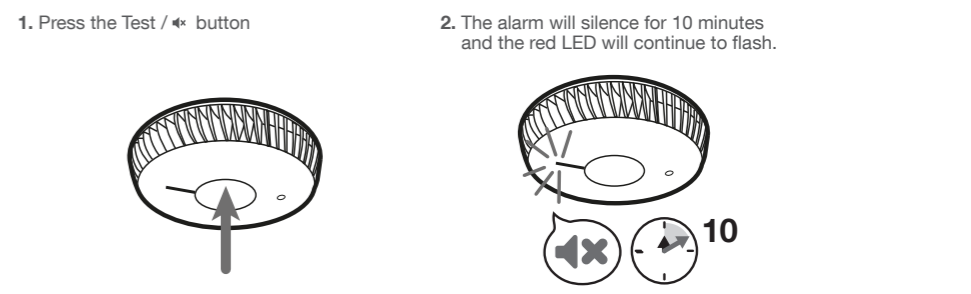
	Audible pattern	LED pattern	Action required
Low battery	1 beep/40 seconds	1 flash/40 seconds	FA6111, FA6115, FA6215: Replace the batteries FA6120: Replace alarm within 30 days
Fault	1 double beep/40 seconds	1 double flash/40 seconds	May not signal alert - replace alarm immediately
End of Life	1 triple beep/40 seconds	1 triple flash/40 seconds	May not signal alert - replace alarm immediately

**TROUBLESHOOTING GUIDE**

<b>If your smoke/heat alarm does not sound during testing:</b>	<ul style="list-style-type: none"> <li>• Check that your device is activated.</li> <li>• If testing after first installation, allow a few seconds for the alarm to settle.</li> <li>• To hear the alarm at full volume double press the Test / * button.</li> <li>• If the alarm has been silenced and is in low sensitivity mode it may not test. Wait 15 minutes then try again.</li> <li>• If the alarm is FA6111, FA6115 or FA6215, replace the battery.</li> </ul>
<b>If your smoke/heat alarm activates in the event of a known false alarm:</b>	<ul style="list-style-type: none"> <li>• Check the location of your device.</li> <li>• Clean the alarm.</li> </ul>
<b>If your smoke/heat alarm sounds unusual or 'chirps' intermittently:</b>	<ul style="list-style-type: none"> <li>• Check the location of your device.</li> <li>• Clean the alarm.</li> <li>• Check that your device is definitely the source of the chirping; make sure the noise isn't coming from another alarm.</li> </ul>
<b>If you experience frequent unwanted alarms:</b>	<ul style="list-style-type: none"> <li>• Check the location of your device.</li> <li>• Clean the alarm.</li> </ul>
<b>If a fault or End of Life is indicated:</b>	<ul style="list-style-type: none"> <li>• Replace the alarm immediately.</li> </ul>
<b>If the light on the FA6111 fails to illuminate:</b>	<ul style="list-style-type: none"> <li>• Check if the device is still within its warranty. If so, contact Technical Support, otherwise, replace the alarm immediately.</li> </ul>

**6. SILENCE FEATURE**

In the event of a fire, your alarm will sound 3 beeps continuously and the LED flash once per second.\* The FA6111 Escape Light Alarm will illuminate continuously.



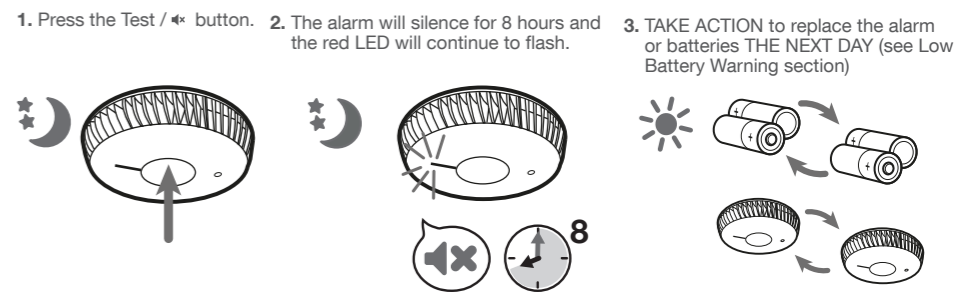
Smoke alarms can react to cooking fumes or other non emergency situations. Your alarm features 'Silence' technology. In the event of a known false alarm you can temporarily silence it by pressing the Test / \* button. The LED will continue to flash once every second to show that it is in Silence mode. Your alarm will automatically return to full sensitivity after 10 minutes.

**NEVER IGNORE ANY ALARM.** If an alarm is sounding, it is warning you of a potentially hazardous situation. Do not ignore it. Ignoring the alarm may result in injury or death. If your smoke or heat alarm activates and you are not absolutely certain of the source of fire, get everyone out of the house immediately.

\* NOTE: For FA6215 Heat Alarms only; after sounding for 30 minutes, the audible alarm signal will increase the pause between alerts (by approx.12 seconds) in order to save power. The LED will continue to flash once every second.

**7. SLEEP EASY™ FEATURE**

If a low battery 'chirp' occurs at night, the alarm can be silenced so it does not keep you from sleeping.



Take action as soon as possible to ensure protection in case of fire. Your alarm will still detect smoke (or heat) during the Sleep Easy mode but you must replace the alarm or batteries within 30 days.

- If your alarm is an FA6111, FA6115 or FA6215 and is signalling low batteries, replace the batteries as soon as possible. Once the batteries have been replaced, the Sleep Easy feature will be disabled for 30 days.
- If your alarm is an FA6120 replace the alarm. If the device is still within warranty, contact our Technical Support team.

NOTE: You can silence a low battery 'chirp' a maximum of 10 times. YOUR ALARM CANNOT BE SILENCED IF IT INDICATES A FAULT OR END OF LIFE (See 'Fault Indication').

**WARRANTY & DISPOSAL**

FireAngel Safety Technology Limited warrants to the original purchaser that its enclosed smoke or heat alarm be free from defects in materials and workmanship under normal residential use and service for a period of 5 (five) years from the date of purchase (not including FA6111, FA6115 or FA6215 replaceable batteries). Provided product is sent back to FireAngel Safety Technology Limited with proof and date of purchase, FireAngel Safety Technology Limited hereby warrants that during the 5 (five) year period commencing from the date of purchase FireAngel Safety Technology Limited, at its discretion, agrees to replace the unit free of charge. The warranty on any replacement FA6111, FA6115, FA6120 or FA6215 alarm, will last for the remainder of the period of the original warranty in respect of the alarm originally purchased - that is from the date of original purchase and not from the date of receipt of the replacement product. FireAngel Safety Technology Limited reserves the right to offer an alternative product similar to that being replaced if the original model is no longer available or in stock. This warranty applies to the original retail purchaser from the date of original retail purchase and is not transferable. Proof of purchase is required.

This warranty does not cover damage resulting from accident, misuse, disassembly, abuse or lack of reasonable care of the product, or applications not in accordance with the user manual. It does not cover events and conditions outside of FireAngel Safety Technology Limited's control, such as Acts of God (fire, severe weather etc.). It does not apply to retail stores, service centres or any distributors or agents. FireAngel Safety Technology Limited will not recognise any changes to this warranty by third parties. FireAngel Safety Technology Limited shall not be liable for any incidental or consequential damages caused by the breach of any expressed or implied warranty. Except to the extent prohibited by applicable law, any implied warranty of merchantability or fitness for a particular purpose is limited in duration for 5 (five) years. This warranty does not affect your statutory rights. Except for death or personal injury, FireAngel Safety Technology Limited shall not be liable for any loss of use, damage, cost or expense relating to this product or for any indirect, or consequential loss, damages or costs incurred by you or any other user of this product.

**DISPOSAL**  
Waste electrical products should not be disposed of with your other household waste. The alarm is ideally suited for disposal within the waste electronic and electrical equipment (WEEE) recycling scheme. Please recycle where facilities exist. Check with your local authority, retailer or contact our Technical Support team for recycling disposal advice as regional variations apply. Replaceable batteries should be removed before disposal of the detector. Both batteries and the detector should be disposed of in line with current regulations. Do not attempt to open. Do not burn.

**For Technical Support reference, please write the alarm batch number and install date below:**

Batch number:       -

Install date:   /   /





