

# Partizan Device Manager

## User manual

Version 0.3, November 26, 2015





## **Abstract**

This document is a user manual for Partizan Device Manager software which was developed according to the standards for software development described in ISO/IEC JTC 1/SC 7. Installation and user instructions for Partizan Device Manager software are described in the user manual.



# Contents

<b>1. Introduction</b> .....	4
<b>1.1 Application.</b> .....	4
<b>1.2 Short description of features.</b> .....	4
<b>1.3 Feedback.</b> .....	4
<b>2. Pre-starting procedure</b> .....	5
<b>2.1 The recommended system requirements.</b> .....	5
<b>2.2 Distribution package location.</b> .....	5
<b>2.3 Partizan Device Manager installation.</b> .....	5
<b>2.4 Software start</b> .....	9
<b>3. User manual</b> .....	10
<b>3.1 Software review.</b> .....	10
<b>3.2 Normal operation mode of the application.</b> .....	15
3.2.1 Information .....	15
3.2.2 General settings .....	16
3.2.3 Channel settings .....	17
3.2.4 Network settings.....	18
3.2.5 Wifi settings. ....	19
3.2.6 Change password.....	21
3.2.7 Streaming video .....	22
3.2.8 Maintenance .....	23
<b>5. Known problems</b> .....	26



# 1.Introduction

## 1.1 *Application.*

Partizan Device Manager software is meant for parameter setting of Partizan cameras and digital video recorders.

## 1.2 *Short description of features.*

Features of Partizan Device Manager software:

- Device information display;
- Device search through the network;
- Equipment network parameter setting;
- Channel setting;
- Account setting;
- Video view;
- Equipment maintenance.

## 1.3 *Feedback.*

Technical support can be reached by the following contacts:

E-mail: [support@partizan.global](mailto:support@partizan.global)

Skype: **partizan-support**

Tel: +44 207 048-32-05.



## 2. Pre-starting procedure

### 2.1 *The recommended system requirements.*

- Processor: Intel Core i3 or similar;
- RAM: at least 3 Gb;
- Available disk space: at least 1 Gb;
- Operating systems:
  - Windows 7 (32-, 64-bit);
  - Windows 8 (32-, 64- bit);
  - Windows 10 (32-, 64- bit).
- Distributed packages Visual C++ for Visual Studio 2013 (vcredist 2013) should be installed;

### 2.2 *Distribution package location.*

The recent version of Partizan Device Manager software can be downloaded using the link

<http://updates.partizan.global/Software/Partizan%20DM/Partizan%20Device%20Manager.exe>

### 2.3 *Partizan Device Manager installation.*

Please, run Partizan Device Manager.exe, choose installation language and click “Next” (Fig. 2.1):

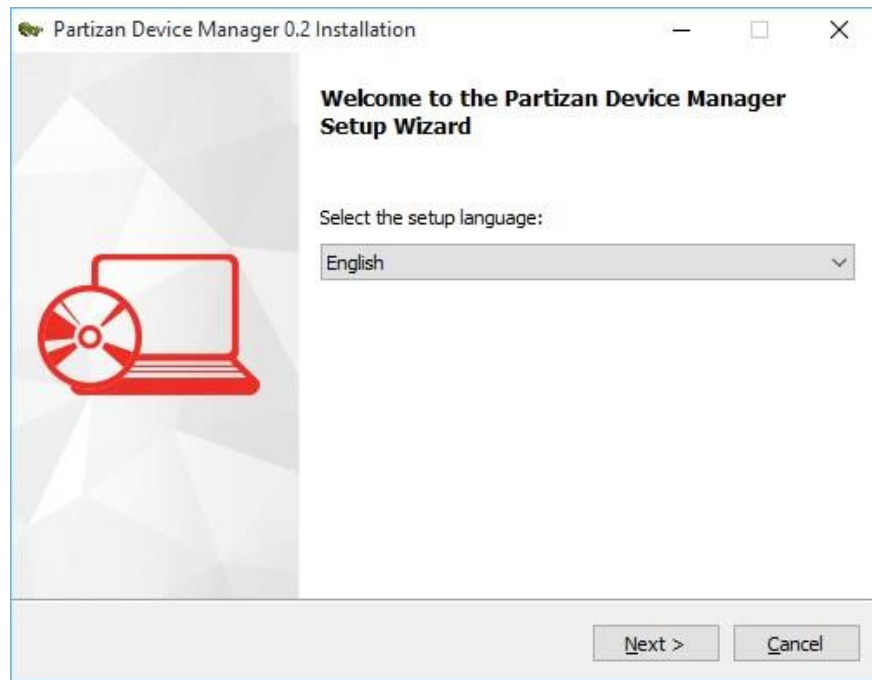


Fig. 2.1 Choosing installation language.

- Click “Next” to continue software installation process (Fig. 2.2):

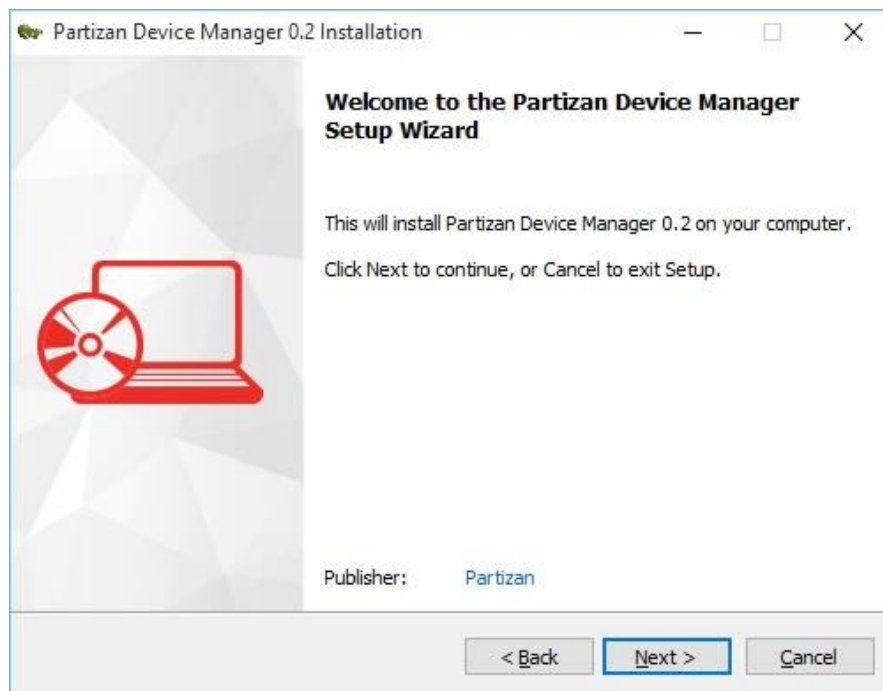


Fig. 2.2 Continuing installation.





- Have a look at the conditions of the License Agreement and click “Next” (Fig. 2.3):

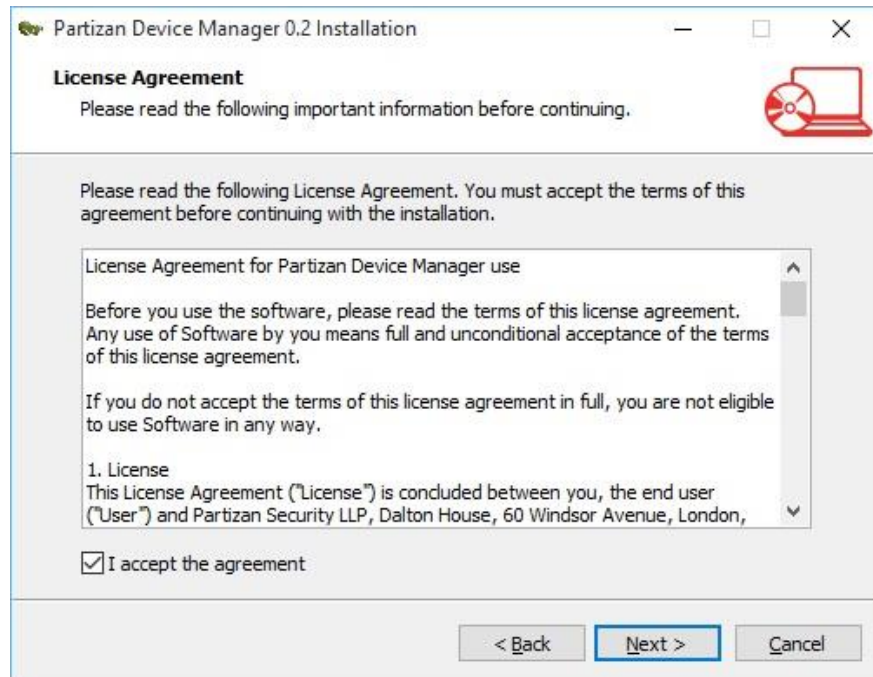
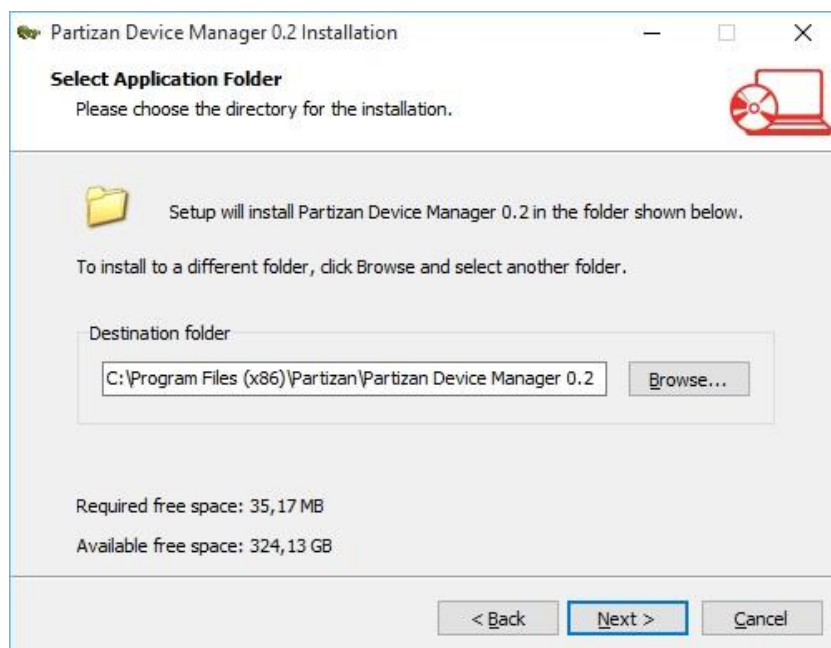


Fig. 2.3 License Agreement.

- Select the installation directory and click “Next” (Fig. 2.4):





- Select additional tasks and click “Next” (Fig. 2.5):

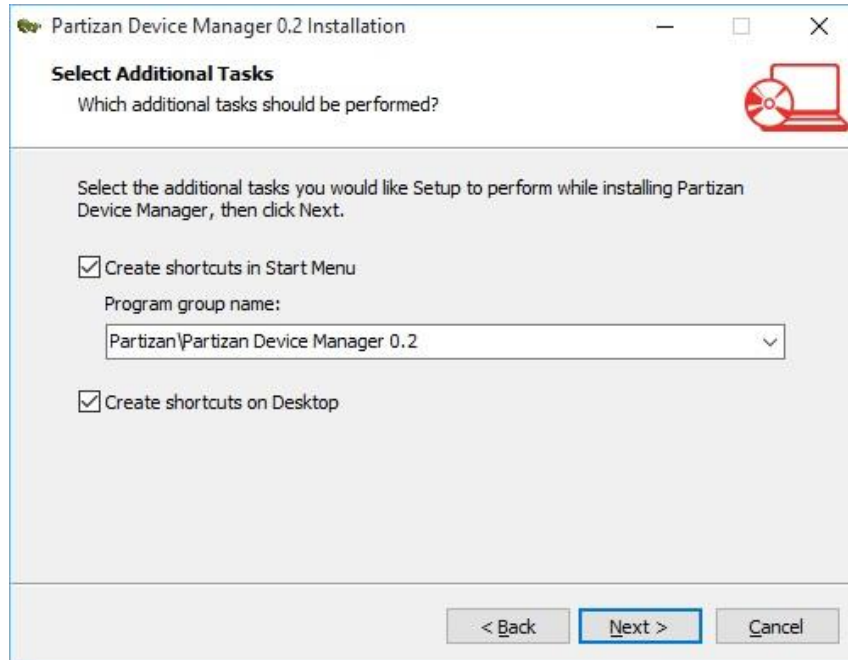


Fig. 2.5 Selection of additional tasks.

- Click “Install” to start installation process (Fig. 2.6):

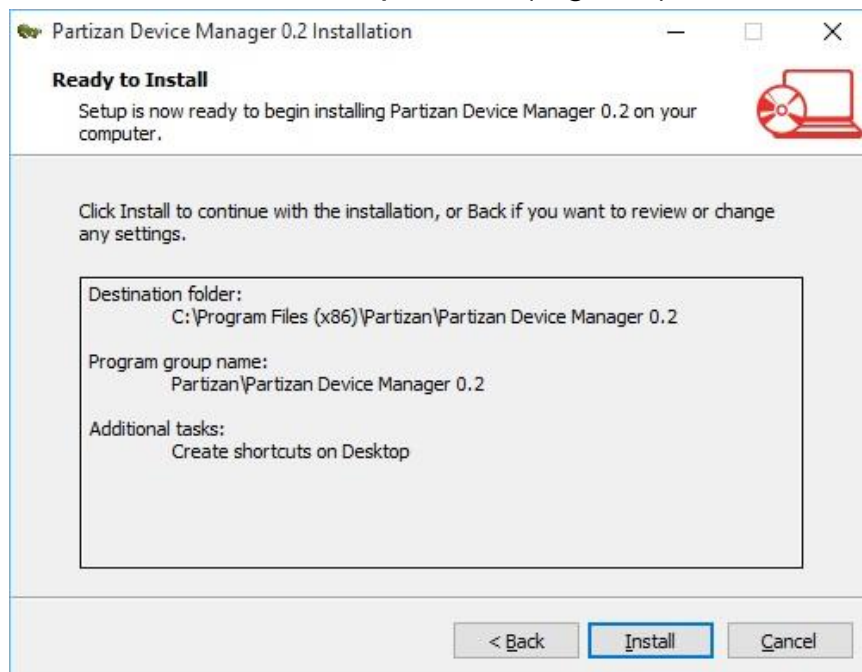


Fig. 2.6 Installation process start.





- Click “Finish” to complete installation process (Fig. 2.7):

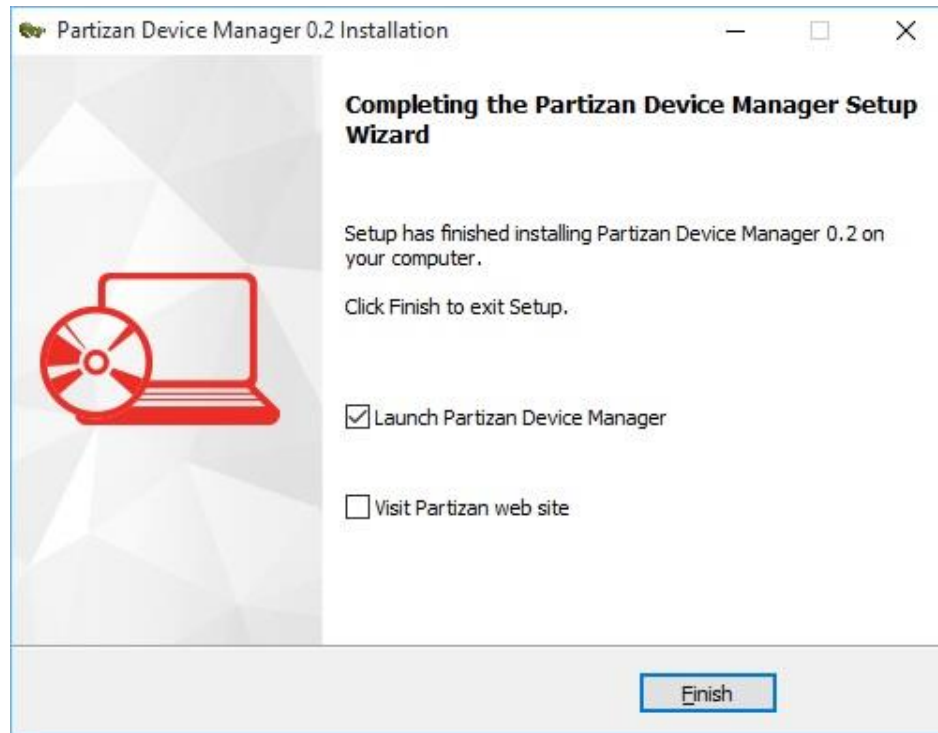


Fig. 2.7 Installation completion.

## 2.4 Software start

To start the software open installation directory and run “Device Manager”.



## 3. User manual

### 3.1 Software review.

The software consists of the following functional areas (Fig. 3.1):

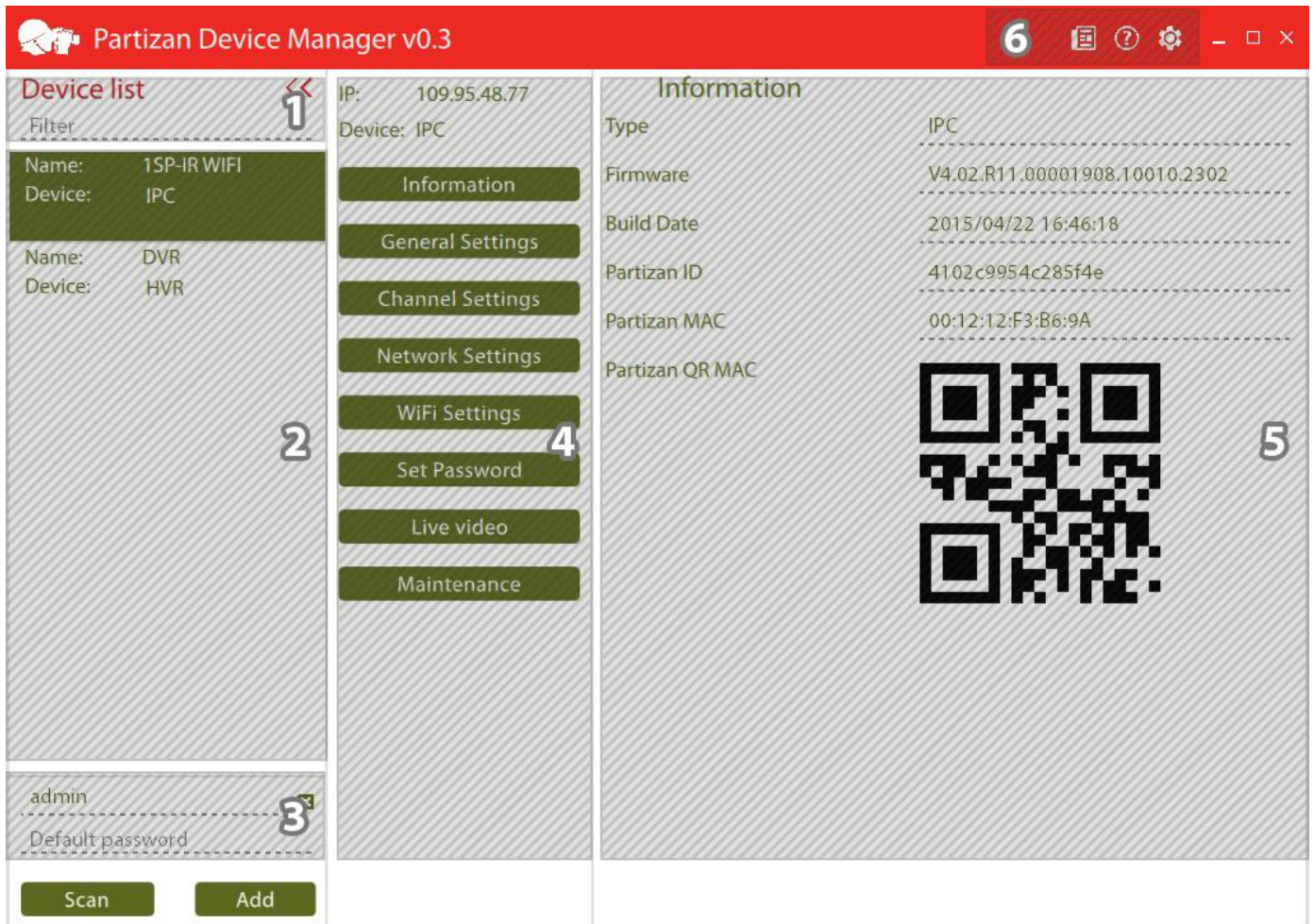


Fig. 3.1 Partizan Device Manager.

1. *Filter for displaying the required devices (works by IP address, MAC or equipment name);*
2. *Displaying the found or manually added devices;*



3. User account and password for authorization with devices by default (it is used during search in the network);
4. Administration tab with connected device;
5. Tab with the selected parameter for setting;
6. Icons with “Programme settings”, “News feed” and “Help”.

Partizan devices will be searched for in local network by clicking button “Search”.

By clicking the button “Add” window with manual device adding will be opened (Fig. 3.2)

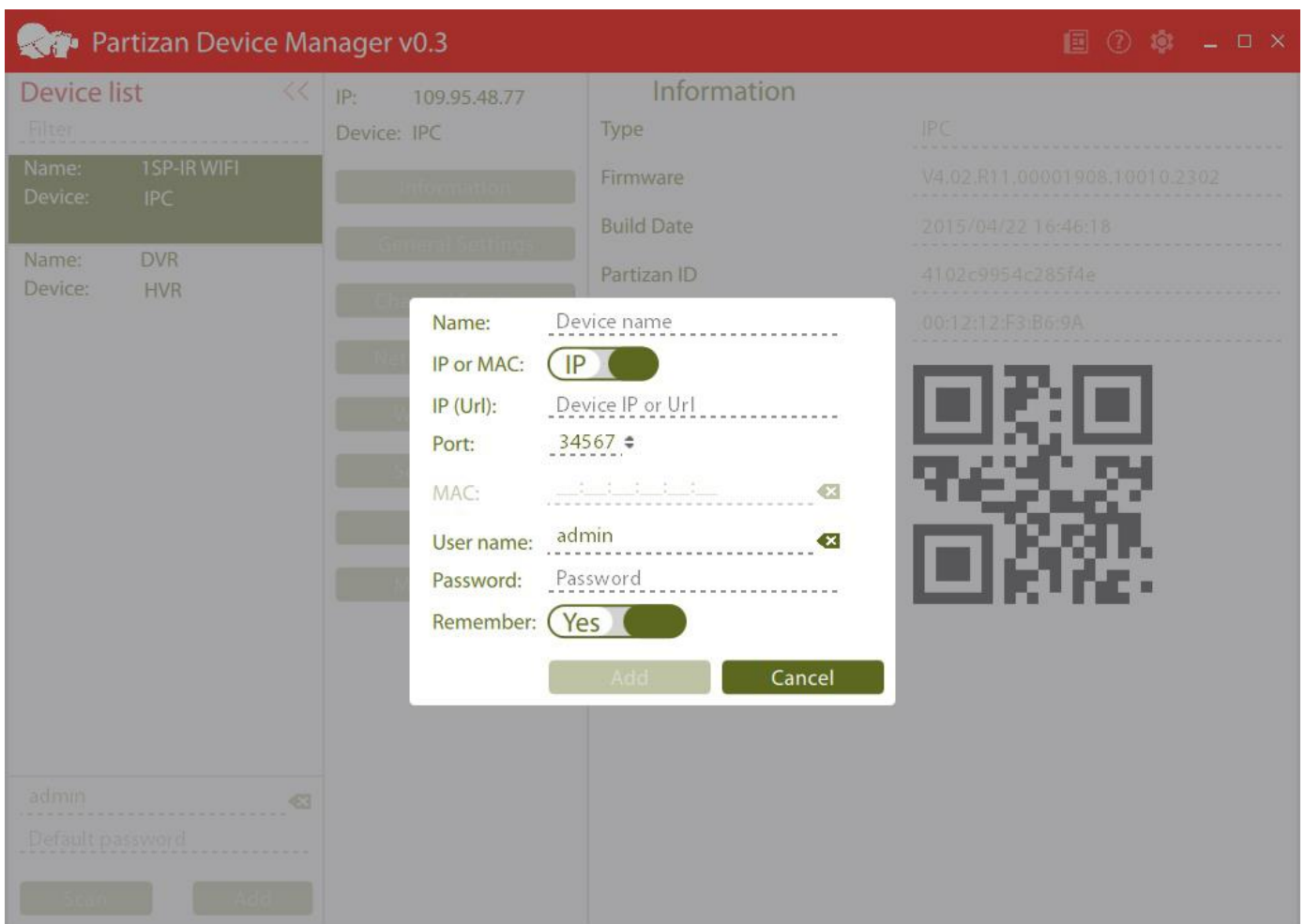


Fig. 3.2 Device adding.

The following parameters must be filled in:





- *Set device name*. If this field is filled in, it will be displayed on added devices tab, otherwise IP address or MAC address of the device depending on the chosen type;
- *Select connection type* to the device IP or MAC;
- If IP is chosen, indicate *IP address of equipment* or domain by connection via DynDNS;
- Indicate device *media port* (by default 34567);
- Indicate *MAC address* by connection via MAC;
- Indicate *user name and password* (by default for digital video recorders **admin/admin**, for IP cameras **admin without password**).

By hovering a cursor over the added or found device the bar with buttons “*Connect*”, “*Change*” “*Change IP*” and “*Delete*” (Fig. 3.3) will be displayed.

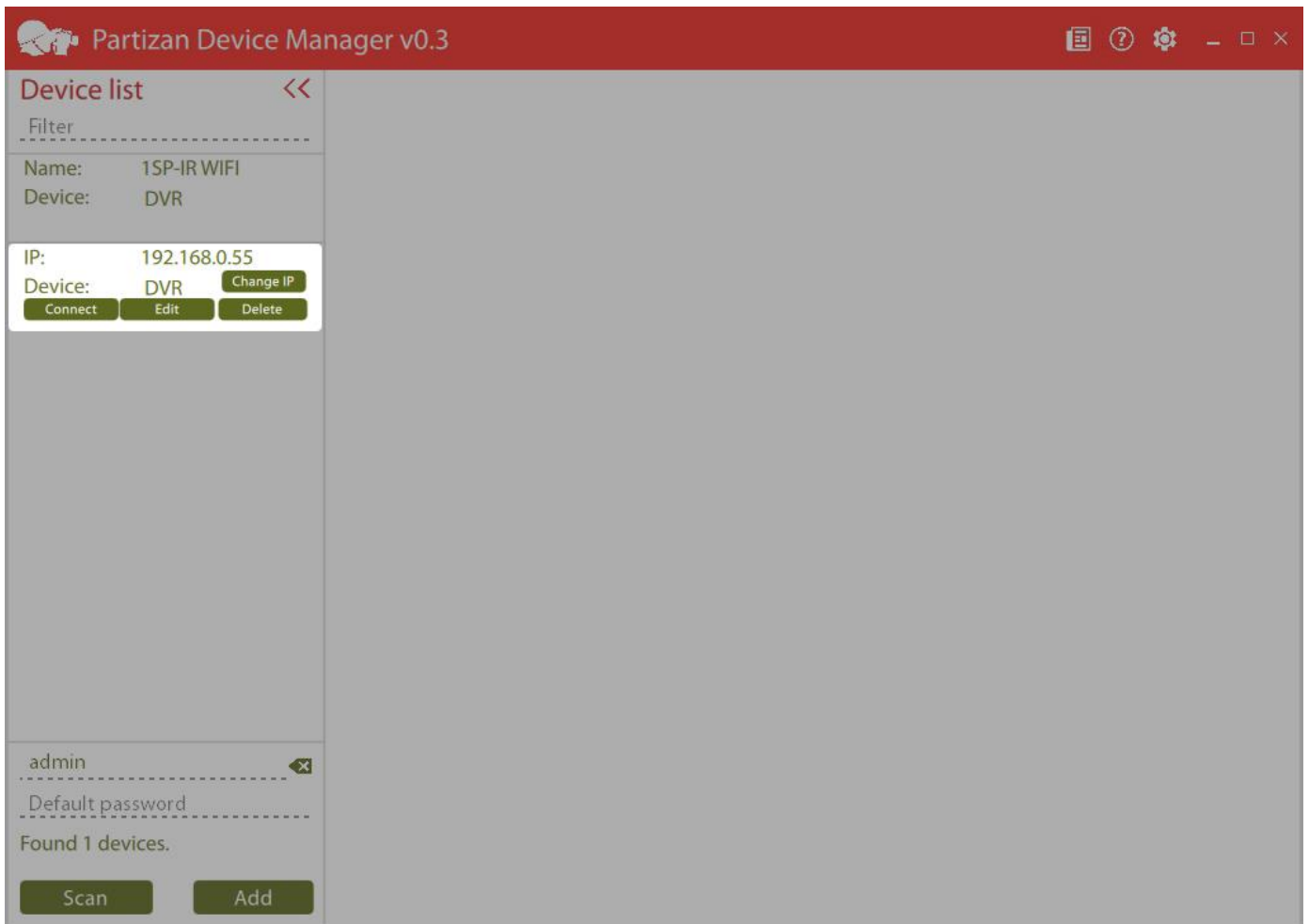



Fig. 3.3 Device connection panel.

For getting access to software settings it is necessary to click the icon . Thereafter window with the application parameters will be opened (Fig. 3.4):

- Switch between normal and pro operation mode;
- Numerical parameter of device seek time through network. It can be from 5 to 60 seconds. Default value is 15 sec;
- Software language selection.



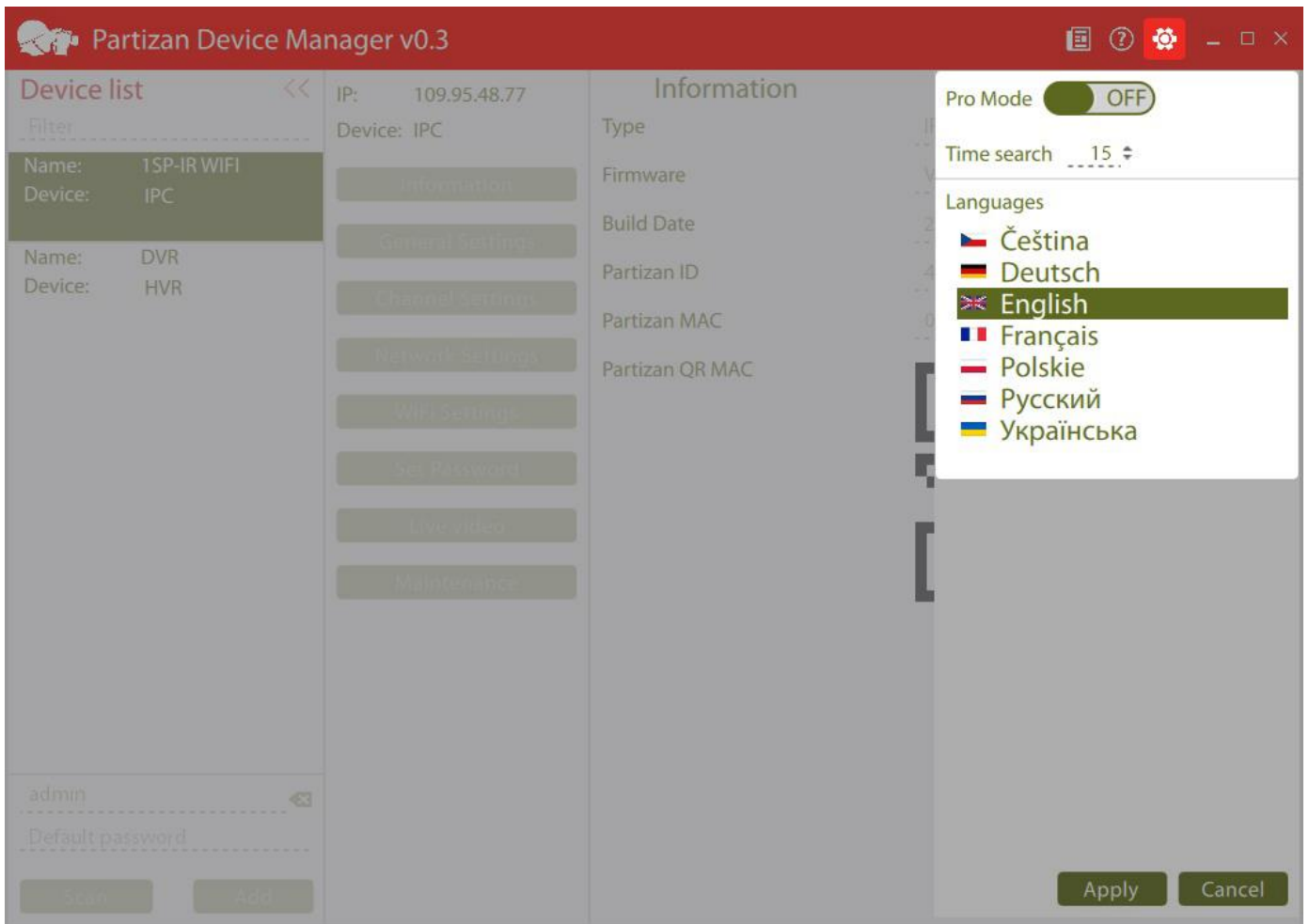



Fig. 3.4 Application parameters.

To watch news feed it is necessary to click the icon . Thereafter the following window will be opened (Fig. 3.5):

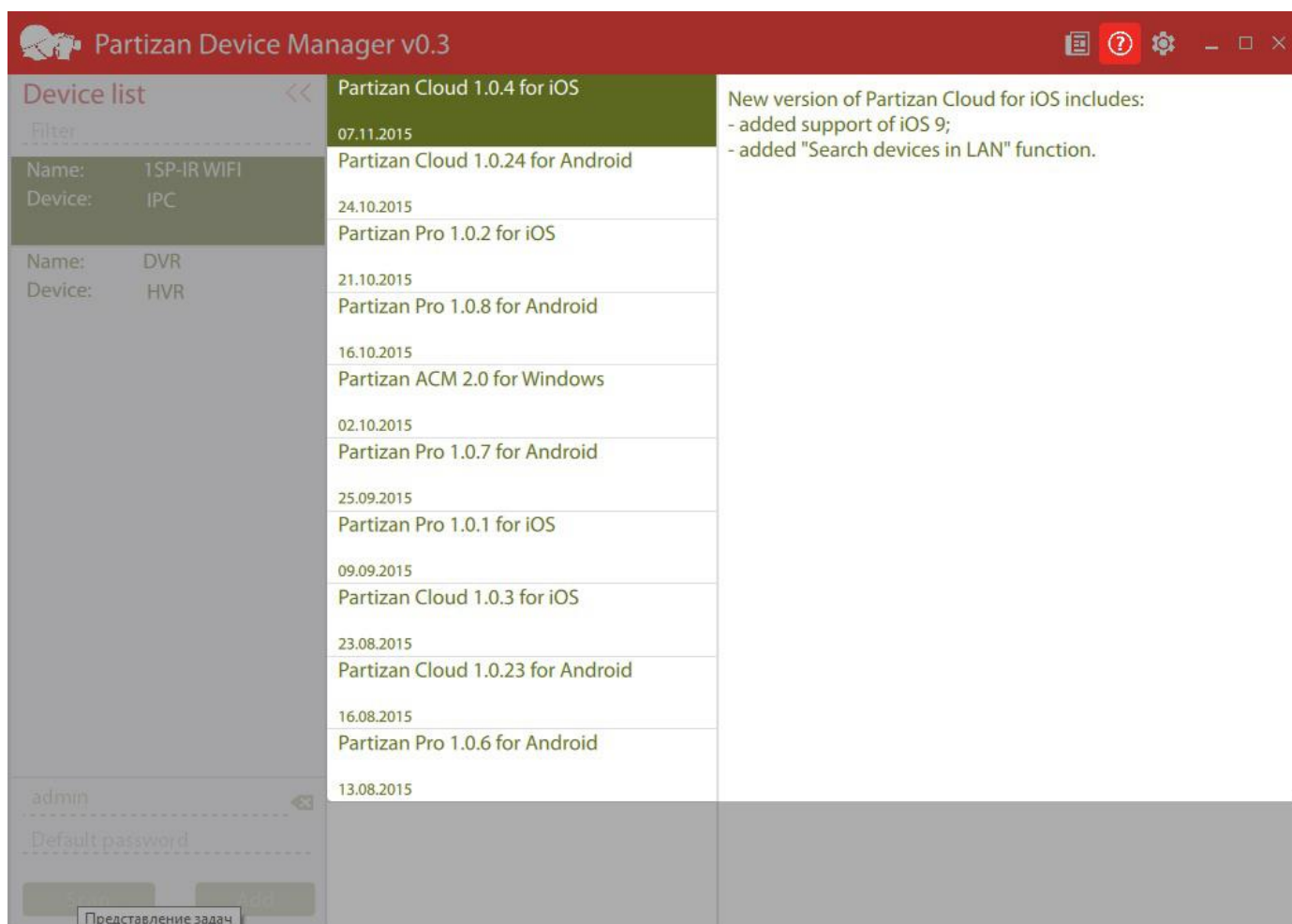


Fig. 3.5 News feed.

By clicking the icon  user manual will be opened.

### 3.2 Normal operation mode of the application.

This operation mode is meant for equipment basic parameter setting.

#### 3.2.1 Information.

Basic information about equipment is displayed on this tab (Fig. 3.6):

- *Type.* Equipment type is indicated:
  - IPC – IP camera;
  - DVR – digital video recorder;



- HVR – hybrid video recorder.
- *Firmware*. Device firmware version is indicated;
- *Build date*. Firmware assembly date;
- *Partizan ID*. Device ID for access to it via NIP service;
- *Partizan MAC*. MAC device address;
- *Partizan QR MAC*. QR code for device adding to mobile applications.

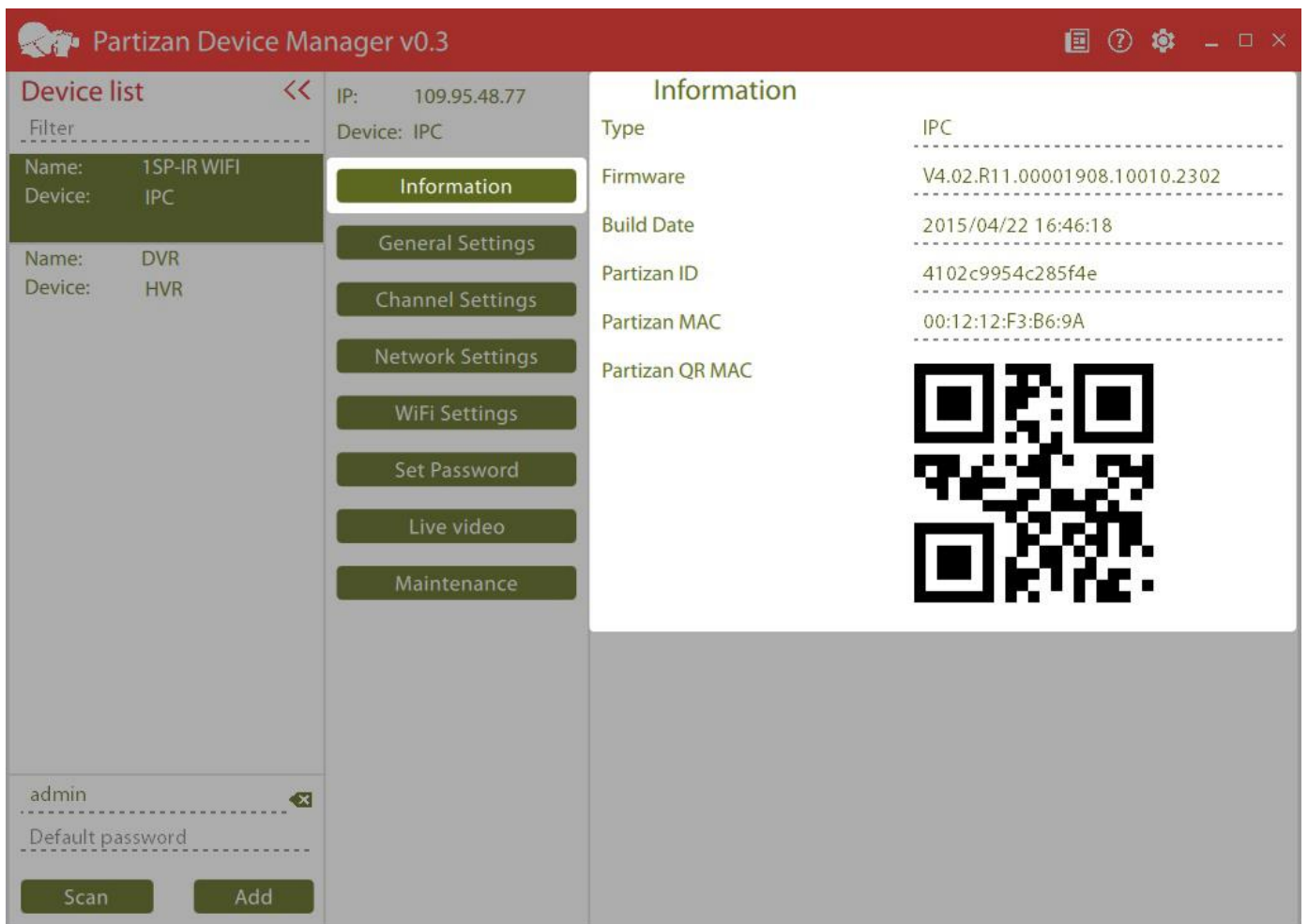


Fig. 3.6 Information.

### 3.2.2 General settings.

The following parameters can be set on this tab (Fig. 3.7):

- *System language*. Device language in web interface;



- *Time zone.* By default 00:00 (Europe/London);
- *Automatic date settings.* NTP server is used for time synchronization;
- *Date.* Fill in date parameters;
- *Time.* Fill in time parameters.

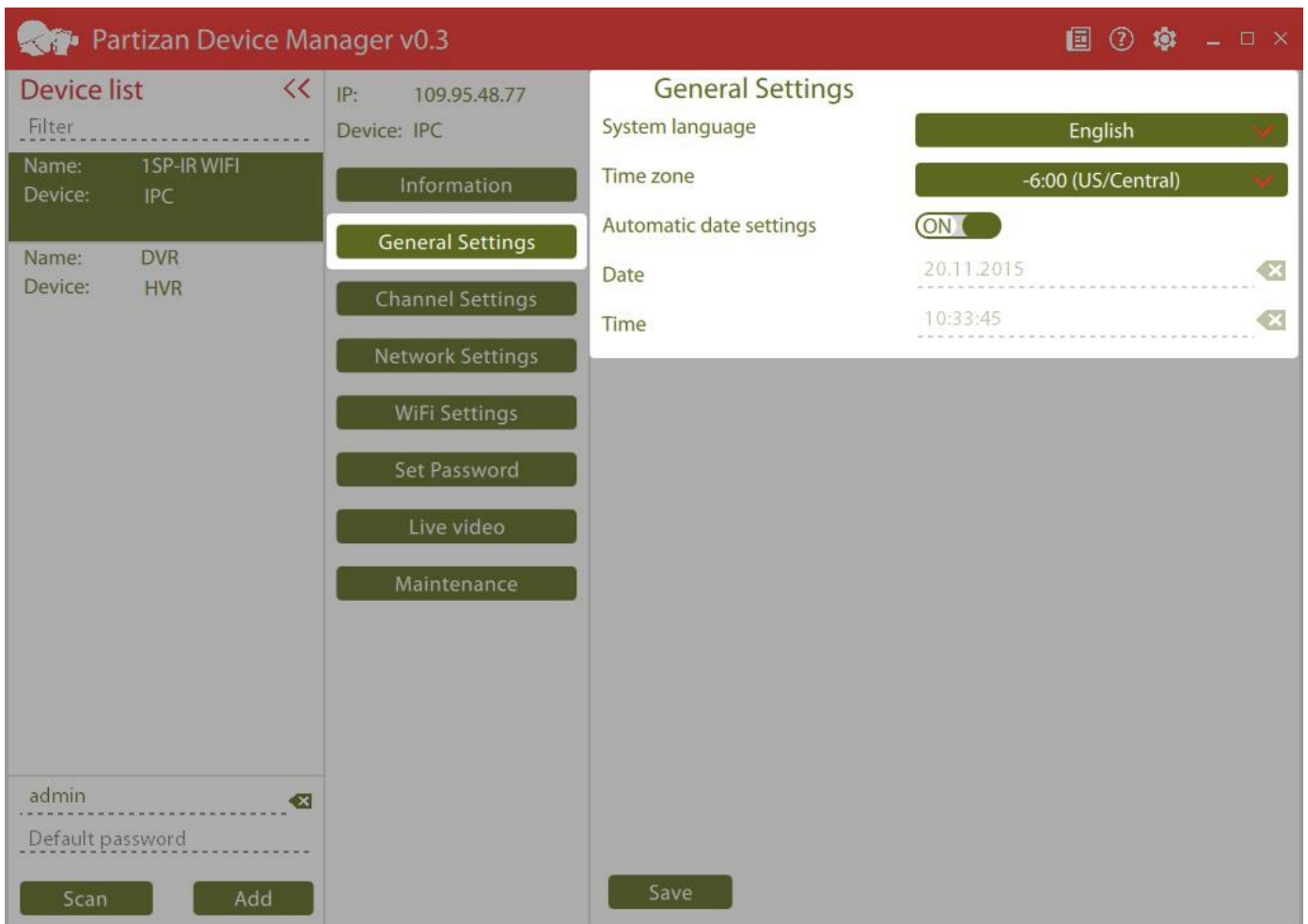


Fig. 3.7. General settings.

### 3.2.3 Channel settings.

The following parameters can be set on this tab (Fig. 3.8):

- *Channel.* Choose channels for setting. You can apply the settings to all channels, having selected *All*;





- *Camera name.* Cyrillic alphabet is not supported;
- *Display camera name.* Displaying camera name on the transmitted from camera image;
- *Display camera time.* Displaying camera system time on the transmitted image;
- *Motion detection.* Motion detection on/ off;
- *Motion sensitivity.* Motion detector sensitivity..

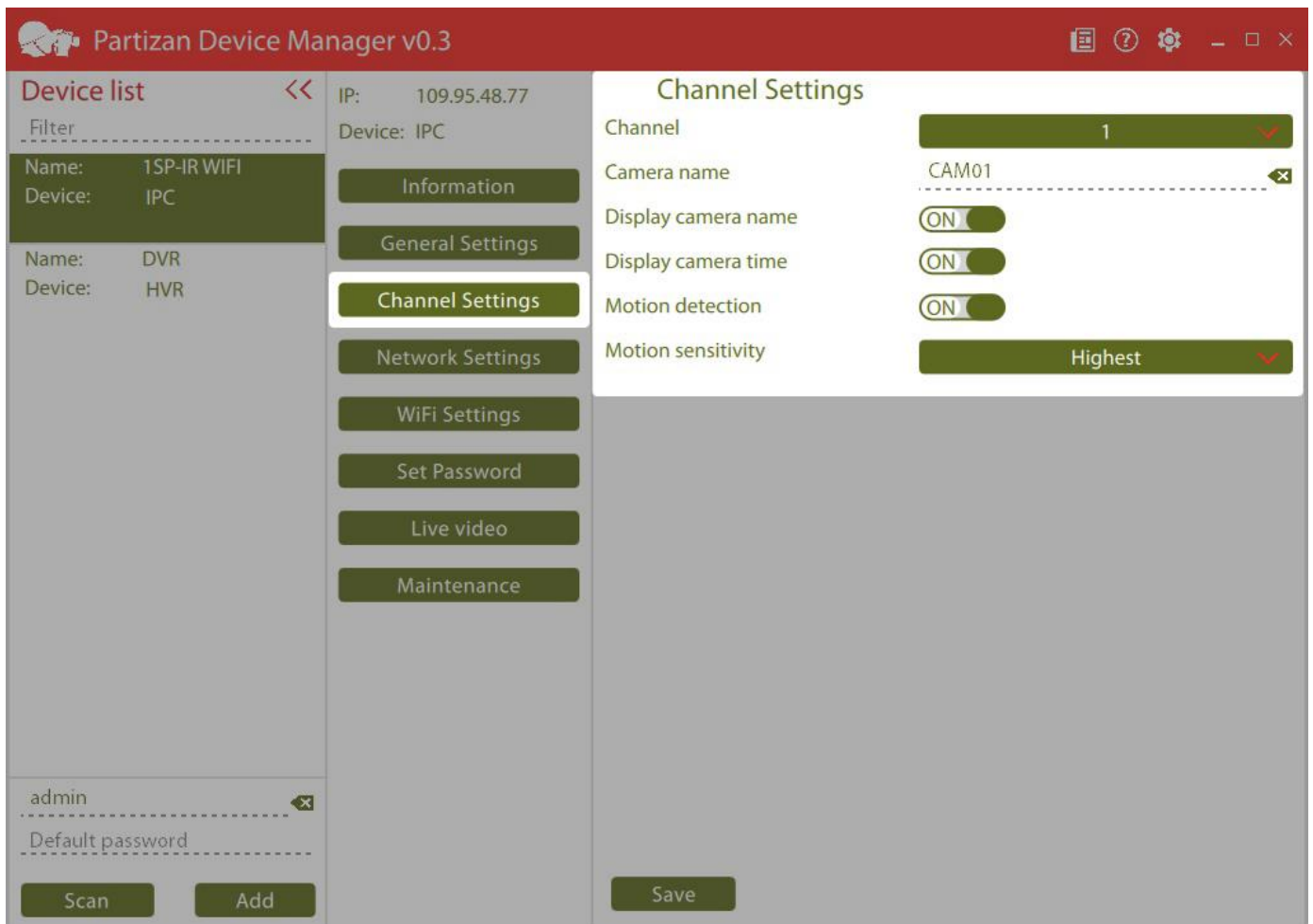


Fig 3.8 Channel settings.

### 3.2.4 Network settings.

The following parameters can be set on this tab (Fig. 3.9):





- *DHCP or static IP address.* Switch;
- *IP address.* IP address indication;
- *Subnet mask.* Subnet mask indication;
- *Default gateway.* Default gateway indication;
- *DNS.* DNS server configuration;
- *IP address automatic tuning.* By clicking this button the application automatically finds free IP address in the network and appoints it to the equipment.

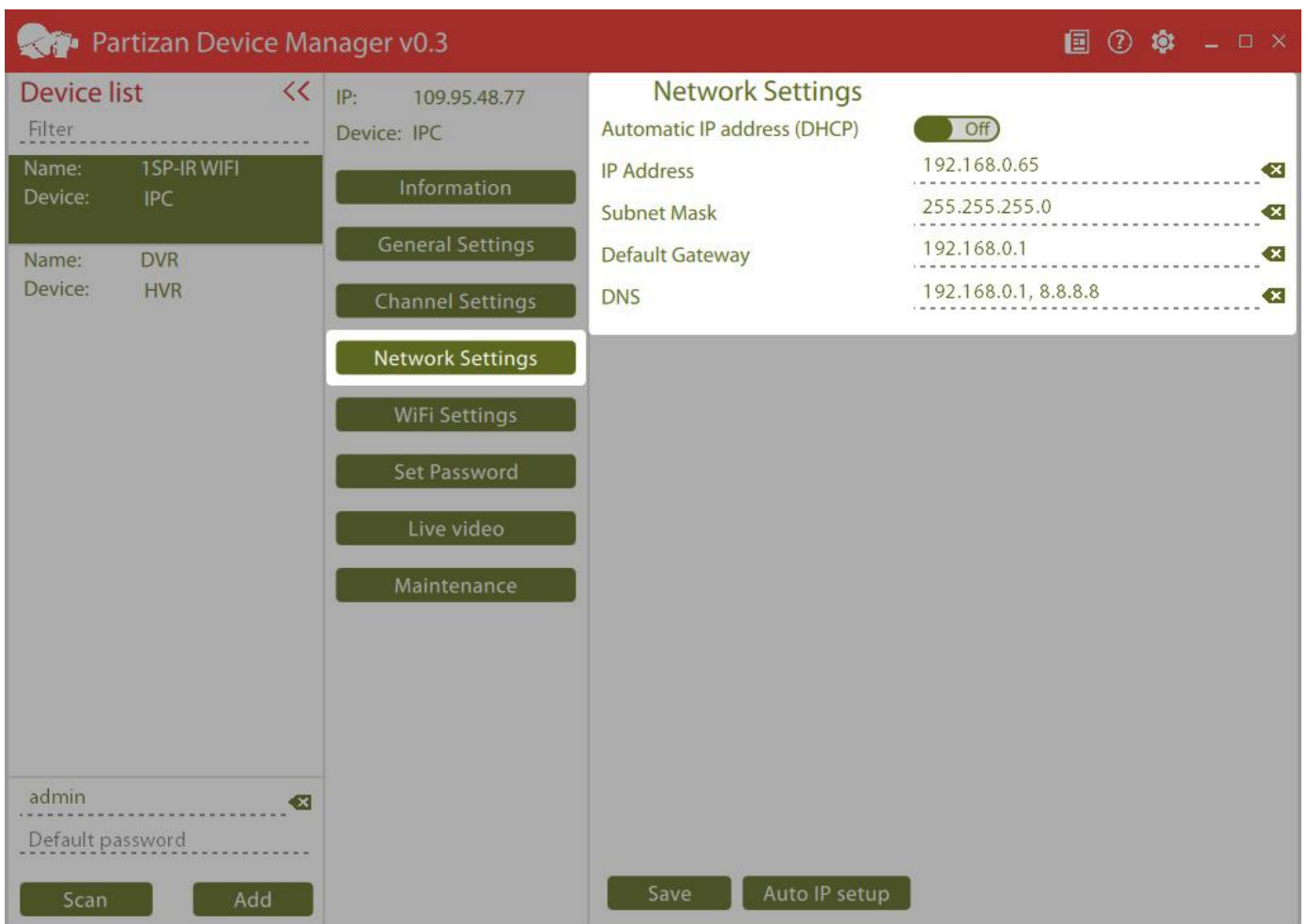


Fig. 3.9 Network settings.

### 3.2.5 Wifi settings.



This tab will be displayed only if the equipment supports Wifi. The configurable settings (Fig. 3.10):

- *Activate WiFi*. Switch;
- *DHCP or static IP address*. Switch;
- *IP address*. IP address indication;
- *Subnet mask*. Subnet mask indication;
- *Default gateway*. Default gateway indication;
- *SSID*. Name of access point;
- *Encryption*. Type of the used encryption;
- *Password*. Authorization password;
- *WiFi list*. List of the access points found upon WiFi search;
- *Auto IP setup*. By clicking this button the application automatically finds free IP address in the network and appoints it to the equipment.

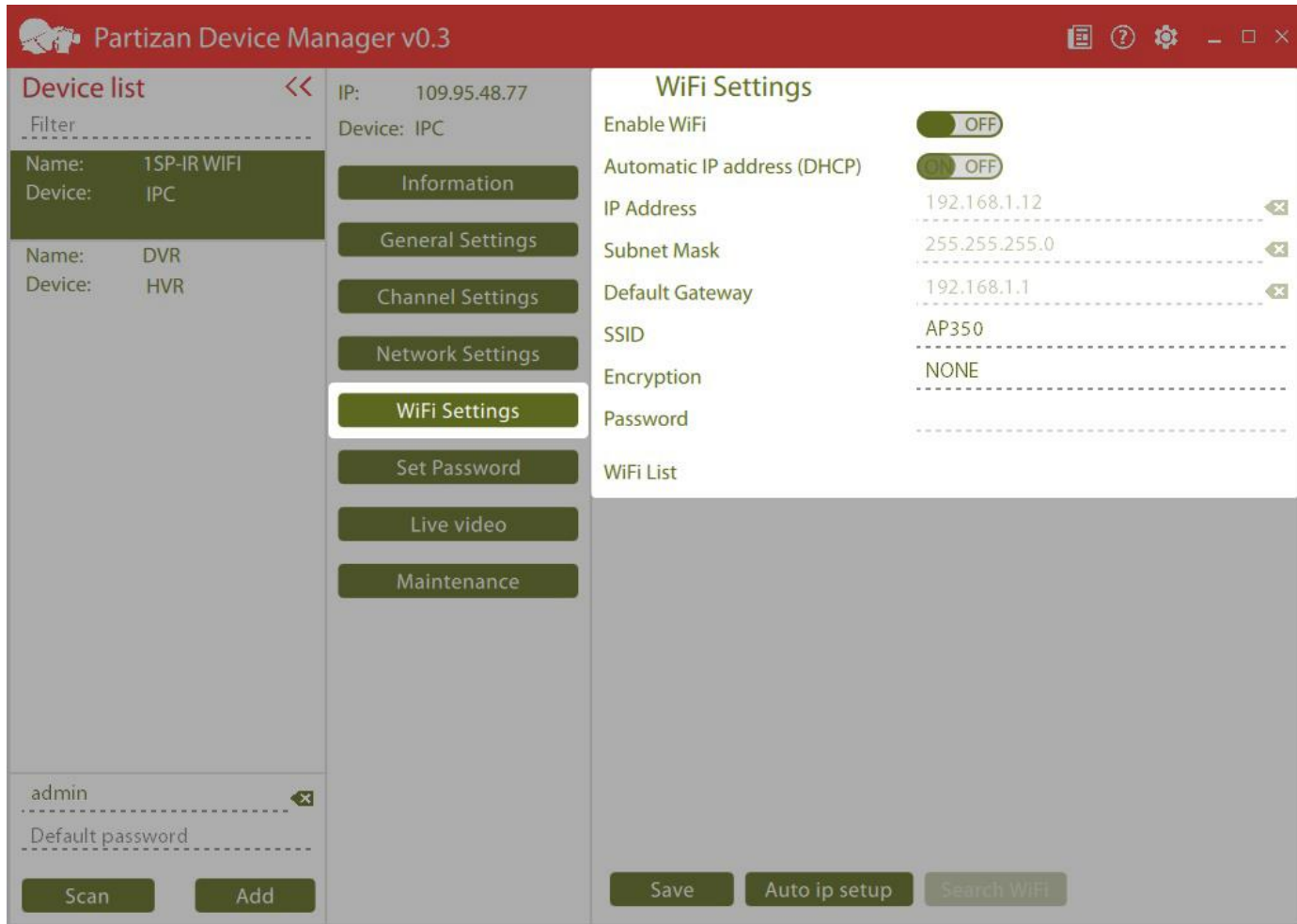


Fig. 3.10 WiFi settings.

### 3.2.6 Change password.

You can change password for **admin** user in this window (Fig. 3.11):

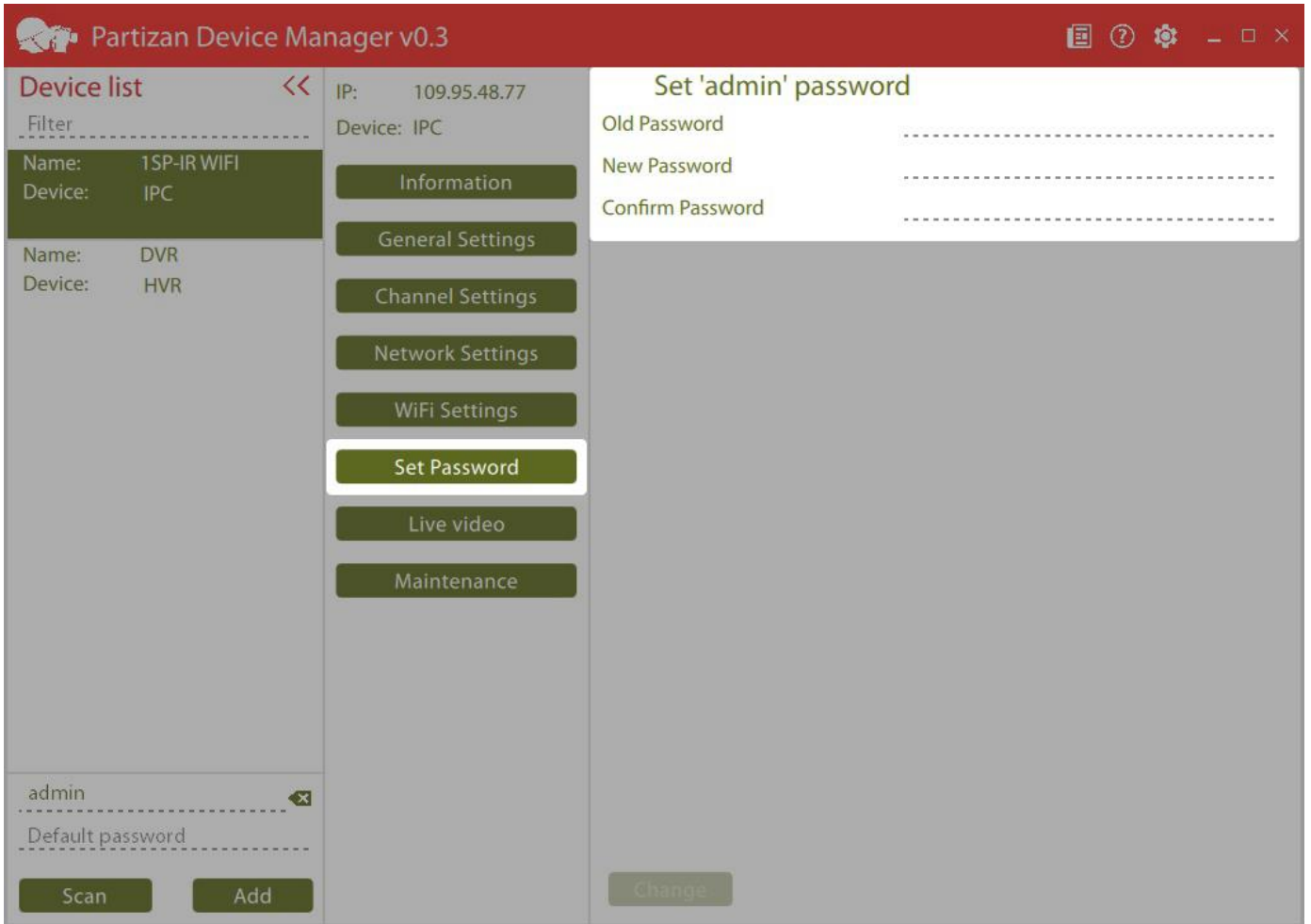


Fig. 3.11 Change password of admin user.

### 3.2.7 Streaming video.



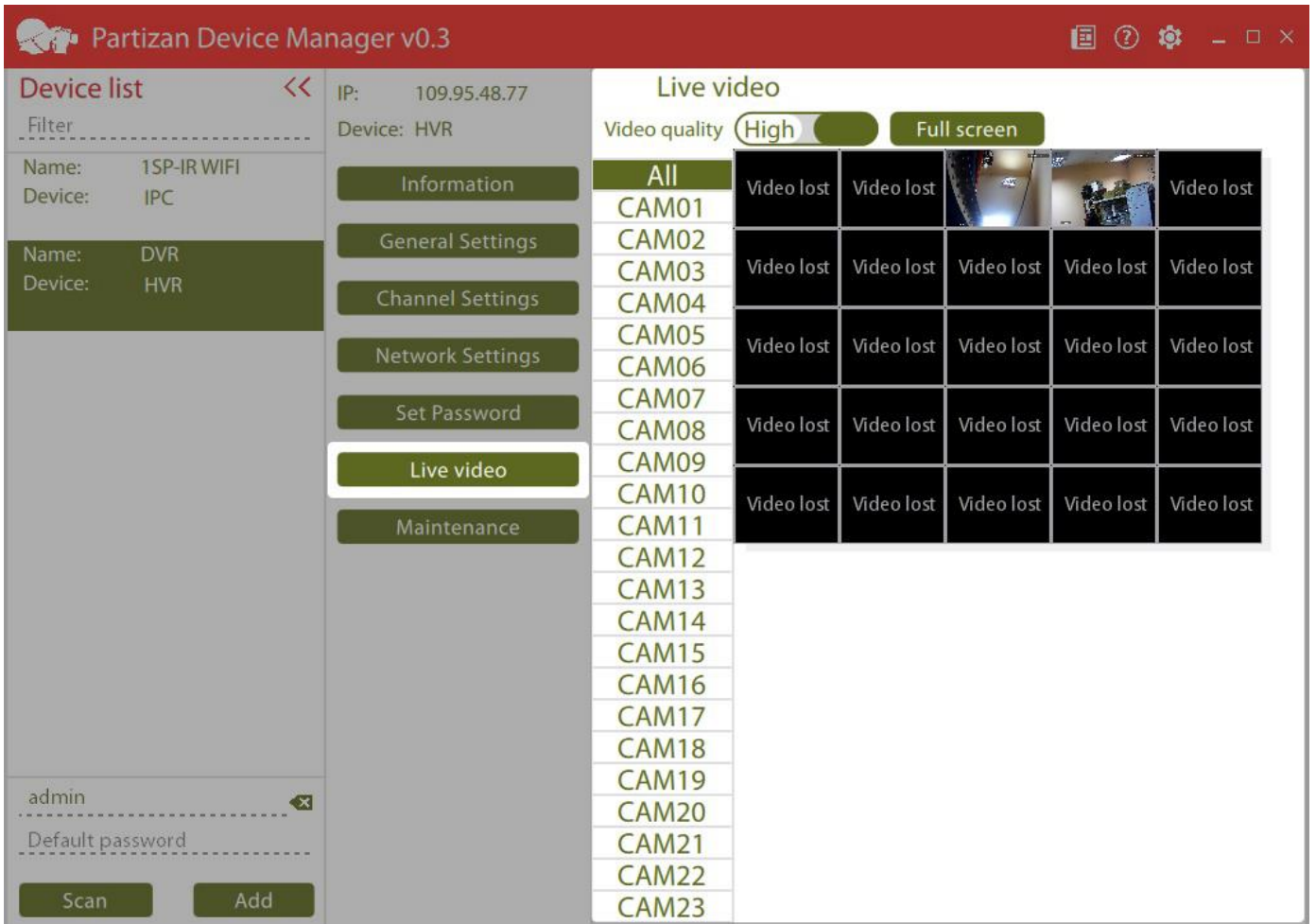


Fig. 3.12 Streaming video

Video from the equipment can be watched on this tab (Fig. 3.12):

- *Video quality.* Switch between main and secondary flow;
- *Full screen.* Full screen video displaying;
- *Switching between squaring device and one camera viewing;* Do so requires to click the button “All” and choose the necessary channel. You can also double click the chosen channel;
- *Alarm processing.* Camera contour is marked red by movement detector operation.

### 3.2.8 Maintenance.



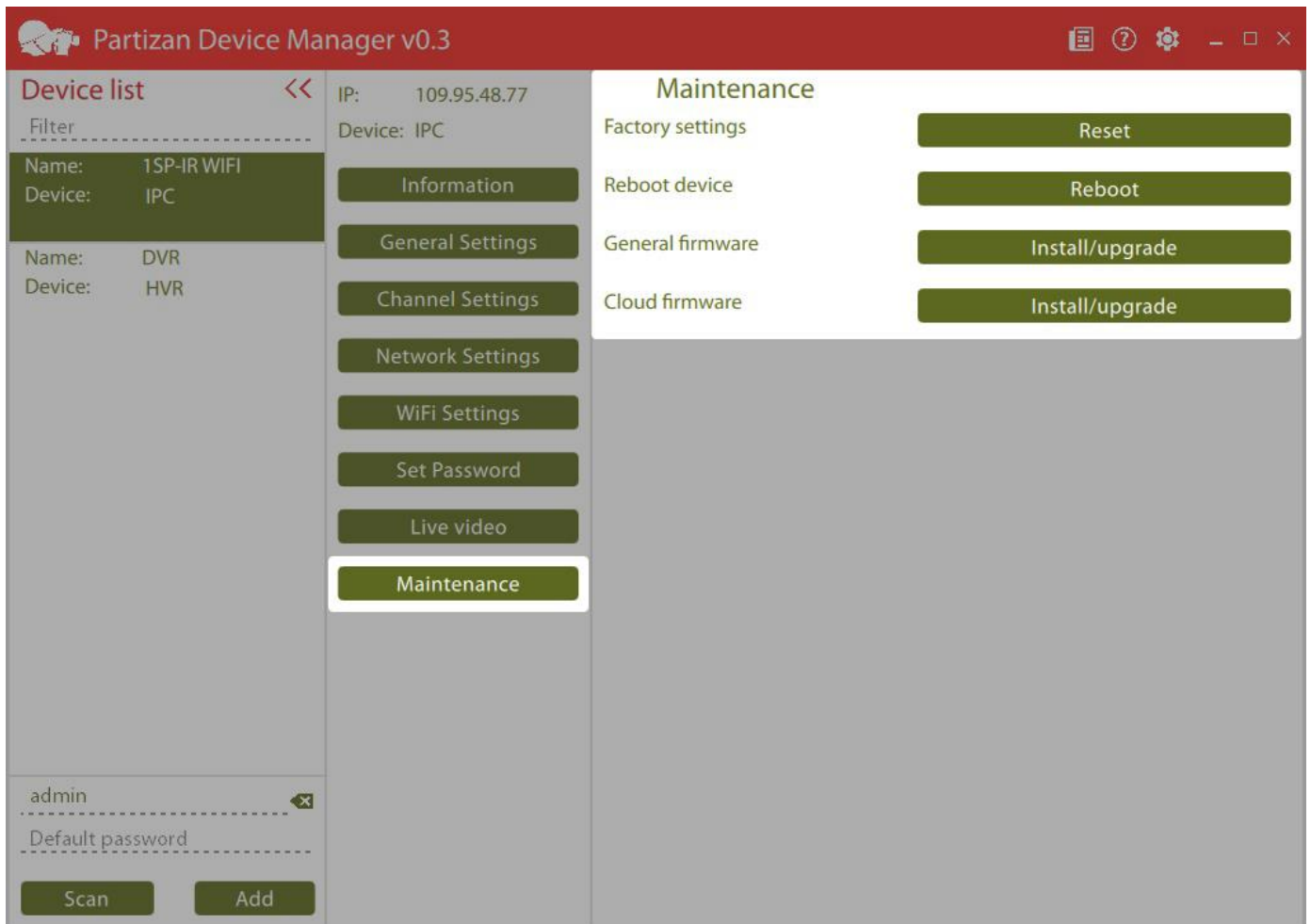


Fig. 3.13 Maintenance

You can do the following on this tab (Fig. 3.13):

- *Factory setting reset.* Reset to the default settings;
- *Reboot device;*
- *General firmware.* Download standard firmware into the device;
- *Cloud firmware.* Download cloud firmware into the device for work with service <http://partizancloud.com/> If cloud firmware is downloaded into the device, it would be impossible to add equipment to the application Partizan Pro and Partizan Device Manager, using MAC address.



Firmware will be downloaded and installed automatically, whereupon the device will be restarted automatically. Settings don't change by firmware upgrade (Fig. 3.14).

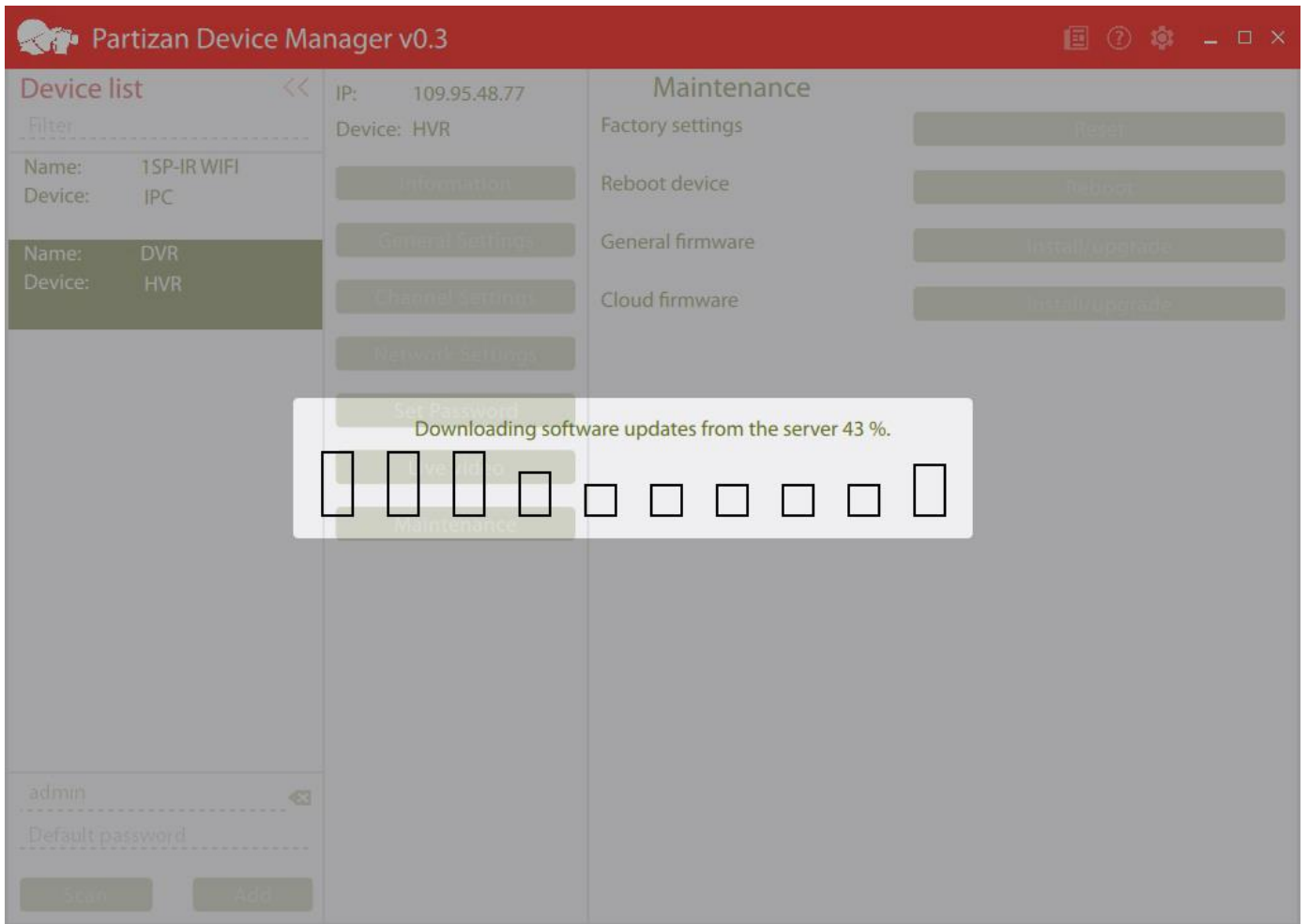


Fig. 3.14 Firmware upgrade



#### 4. Troubleshooting

No.	Problem	Solution
1	Software starts, icon appears on the system panel but application window is not displayed.	Check whether video card drivers or DirectX elements are installed.
2	While starting application ends with error (MCVCP120.dll is not found).	vccredist 2013 packages are not installed. Install it following the link: <a href="https://www.microsoft.com/ru-ru/download/details.aspx?id=40784">https://www.microsoft.com/ru-ru/download/details.aspx?id=40784</a> .

#### 5. Known problems

No.	Problem	Comments
1	It is not started on Windows XP.	Works on Windows XP support are being carried out but with low priority. Company Microsoft doesn't support Windows XP any more, that's why it's rather difficult to provide its support with the current development environment.
2	Equipment is outside the network.	<ol style="list-style-type: none"> <li>1) Make sure computer has access to local network;</li> <li>2) Don't connect camera to computer directly – in this case function of search won't able to work without manual computer network setting;</li> <li>3) Make sure computer and equipment are in the same local network (Ideally, there is only one commutator between computer and device)</li> <li>4) Make sure computer or computer fire wall doesn't restrict broadcast transmission.</li> </ol>
3	Facilities search finds not all facilities.	The function of search is not perfect at the moment.